



GENERAL DESTINATION INFORMATION

Slovenia in brief: coiled up by mountains, surrounded by Austria, Italy, Hungary and the Adriatic Sea on the one side, and Croatia on the other, this Central European country of two million inhabitants, which is only half the size of Switzerland, surprises most first-time visitors with the array of its landscapes and the rich cultural heritage. Slovenia has joined the **European Union** in 2004 and has introduced **the Euro** as its official currency in January 2007. By the end of this same year, Slovenia has joined the **Schengen Zone** and was shortly after proud to host, in the first half of 2008, the Presidency of the EU.

Ljubljana, the capital, is a vital city which is developing with a clear vision, putting the quality of life at the forefront. Although, with **270.000 residents**, it does not rank among the major European capitals and large cities, it combines in fact many facilities and services of a metropolis with the **relaxed ambience** and **safety** of smaller towns.

The city's architecture, a harmonic blend of **medieval Old Town, Baroque, Art Nouveau** and newer styles as well as the lively events agenda and café society have made Ljubljana a destination under growing demand. Its feeling of youthful energy can be attributed to **60,000 university students** and is reflected in the dynamic alternative arts production that complements a myriad of events in the framework of institutional culture running throughout the year.

Ljubljana also prides itself on being the motor behind the development of Slovenia's conference market. **Modern / functional meeting facilities** and state-of-the-art technical equipment, **professional support** of local PCO / DMCS, a good choice of event space for social functions complemented by a creative catering offer, as well as **good language skills** are important elements contributing to the success of an event. On top of this, the feeling of **well being, safety, relaxed efficiency and hospitality** are often quoted among impressions which conference delegates and business visitors carry from Ljubljana.





ACCOMMODATION FACILITIES

All the main hotels as well as the majority of other properties (bed & breakfast, hostels, short-let apartments, etc.) have been extensively refurbished or built anew over the last decade.

A number of them are **centrally located** and are within **walking distance from the Old Town**.

The closest ones, within the radius of 10 minutes' walk, are:

Hotel Lev ****, www.hotel-lev.si, 173 rooms

Grand hotel Union ****superior, www.gh-union.si, 327 rooms

Best Western Premier Hotel Slon ****, www.hotelslon.com, 168 rooms

Cubo Hotel ****, www.hotelcubo.com, 26rooms

Hotel Vander Urbani Resort ****, www.vanderhotel.com, 16 rooms

Lesar Hotel Angel****, www.angelhotel.si, 12 rooms

Antiq Hotel****, www.antiqhotel.eu, 14 rooms

Antiq Palace Hotel&Spa****, www.antiqpalace.com, 18 rooms

Allegro Hotel****, www.allegrohotel.si, 17 rooms

Central Hotel ***, www.centralhotel.si, 74 rooms

City Hotel ***, www.cityhotel.si, 203 rooms

Hotel Park***, www.parkhotel.si, 90 rooms

Hotel Meksiko***, www.hotel-meksiko.si, 49 rooms

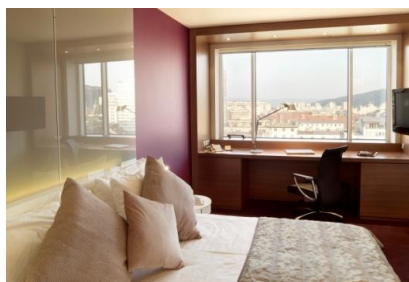
B&B Slamič***, www.slamic.si, 11 rooms

Hotel Pri Mraku***, www.daj-dam.si, 35 rooms

Hotel Emonec **, www.hotel-emonec.com, 41 rooms

Hostel Celica*, www.hostelcelica.com, 29 rooms / 90 beds

Hostel Tresor, www.hostel-tresor.si, 29 rooms / 105 beds





ACCESS

By Airplane

All flights to and from Ljubljana are operated through the **Ljubljana International Airport**, which is located at 25 km from the city centre. **Adria Airways**, Slovenia's national carrier and a **Star Alliance** member, has over 50 year experience in charter and scheduled flights. Today, it operates approx. 170 direct scheduled flights per week from Ljubljana to 18 destinations, mainly in Europe.

Other airlines operating scheduled flights to Ljubljana Airport are: Austrian Airlines, Aeroflot, Air France, EasyJet, Finnair, JAT, Montenegro Airlines, Turkish Airlines and Wizz Air.

Flight connections with the highest frequencies from Ljubljana Airport to major European cities:

	Weekdays	Weekends	Flight time
Amsterdam	1 / day	1 / day	2:00 h
Brussels	2 - 3 / day	2 / day	1:50 h
Belgrade	1 / day	1 / day	1:00 h
Frankfurt	4 / day	1 to 2 / day	1:25 h
Istanbul	1 to 2 / day	1 to 2 / day	3:00 h
London	1 to 2 / day	1 to 2 / day	1:20 h
Moscow	1 / day	1 to 2 / day	2:55 h
Munich	3 / day	3 / day	1:00 h
Paris	2 / day	1 to 2 / day	2:00 h
Skopje	1 to 2 / day	1 to 2 / day	1:25 h
Tirana	1 / day	1 / day	1:25 h
Vienna	3 / day	3 / day	0:50 h
Zurich	4 / day	2 to 4 / day	1:00 h

Other destinations with non-stop connections are: Copenhagen, Helsinki, Manchester, Podgorica, Pristina, Sarajevo and Skopje.

New destinations in 2014 are: London, Dublin, Prague and Warsaw.

Distances from the neighbouring airports to Ljubljana by road:

The closest airports in the neighbouring countries are listed as an additional gateway, with special regards to direct connections to some cities or additional low cost airlines. Ljubljana-based shuttle companies provide well-organised and reliable transfer arrangements, bookable online.

Graz Airport Austria: 187 km • Trieste Airport Italy: 130 km • Klagenfurt Airport Austria: 85 km Venice Airport , Italy: 230 km • Zagreb Airport , Croatia: 140 km
--



By car

Slovenia's road network has been modernised over the past decade to provide an efficient transport system, improve road safety, and ensure a wider European integration. The motorway cross is nearly completed and the access from the border crossings with Italy, Austria, Croatia and Hungary to Ljubljana is swift. A motorway vignette, which has replaced the toll system, is compulsory for vehicles up to 3.5 tons, while the toll applies for larger vehicles. **Some driving distances are quoted below:**

Belgrade: 540 km	Berlin: 995 km	Budapest: 570 km	Milan: 500 km
Munich: 400 km	Prague: 650 km	Rome: 750 km	Vienna: 375 km

Moving Around the City

The public bus network connects all city districts and has regular schedules throughout the day. These are complemented by suburban buses, which link Ljubljana to its close surroundings. A smart card **Urbana**, has to be purchased before the use of public transport and can be used also for rental of the city bike scheme –BicikeLJ. It is also convenient to travel by public bus to reach other localities around the country. Ljubljana has also a well-organised taxi service, which is reasonably priced. Taxis are available at fixed spots, or they can be ordered by telephone.

By Rail

There are regular train connections to several countries around Europe, including:

- **Germany** (via Munich)
- **Austria** (via Salzburg, Villach and Graz)
- **Hungary** (via Budapest)
- **Italy** (via Trieste and Venice)
- **Switzerland** (via Zurich)
- **Croatia** (via Zagreb and Rijeka)
- **Czech Republic** (via Prague)
- **Greece, Macedonia and Serbia** (via Thessaloniki, Skopje and Belgrade)

Comfortable trains conveniently serve the capital as well as other tourist destinations in Slovenia.
Web page: www.slo-zeleznice.si/en.





LEGEND

- Tourist information
- Main bus station
- Railway station, stop
- Hospital, emergency medical service
- Police station
- Swimming pool
- Car park
- Parking house
- Underground parking



Walking time from Tromostovje - Triple Bridge

CONGRESS & EXHIBITION CENTRES

- CD - Cultural & Congress Centre
- GR - Ljubljana Exhibition and Convention Centre

CONVENTION HOTELS

- Austria Trend Hotel Ljubljana****
- Grand Hotel Union Executive ****
- Grand Hotel Union Business ****
- Mons Hotel and Congress Centre****

HOTELS WITH CONFERENCE FACILITIES

- Lev Hotel*****
- Best Western Premier Hotel Slon****
- Central Hotel ****
- Antiq Palace Hotel & Spa ****
- Hotel Cubo****
- Plaza Hotel Ljubljana ****
- City Hotel Ljubljana ***
- Hotel Park Ljubljana ***
- M Hotel ***
- A Hotel ***
- G Design Hotel ***
- Vander Hotel ****

OTHER HOTEL ACCOMMODATION

- Antiq Hotel ****
- Allegro Hotel ****
- Lesar Hotel Angel ****
- Hotel Nox****
- Dvor Tacen ****
- Pri Mraku Hotel***
- Adora Hotel ***
- Ljubljana Resort ***
- Hotel Stil ***
- Birokrat Hotel***
- Meksiko Hotel***
- Garni Hotel Azur ***
- Hotel Medno ***
- Emonec Hotel **
- Bit Center Hotel *

Hostels

- Tresor Hostel
- Alibi Hostel
- Hostel Celica
- H2Ostel
- Hostel Vila Veselova
- Alibi M14 Hostel
- Zeppelin Hostel
- Fluxus Hostel
- Youth Hostel Ljubljana
- Aladin Hostel
- Hostel Simbol
- Confidenti Hostel
- Hostel & Hotel Print
- Park Hostel
- 24 Hostel and Spa
- Sax Hostel

SPECIAL VENUES

- Ljubljana Castle
- Skyscraper
- Križanke Summer Theatre
- The Slovenian Philharmonic
- ZRC SAZU - Research Centre of the Slovenian Academy of Sciences and Arts
- Kino Šiška Centre for Urban Culture
- Auersperg Palace - City Museum of Ljubljana
- Tivoli Manor - International Centre of Graphic Art
- National Museum of Slovenia
- National Gallery
- Cekin Manor - Museum of Contemporary History
- Fuzine Castle - Museum of Architecture and Design
- Festival Hall - Pionirski dom
- Opera House
- Stage under the Stars - Puppet Theatre of Ljubljana
- Stožice Sports Centre
- Viba Studio
- Central Post Office

OTHER SIGHTS OF INTEREST

- Franciscan Church
- Triple Bridge
- Prešernov trg square
- Town Hall
- Central Market
- Cathedral (Church of St. Nicholas)
- Dragon Bridge
- Butchers' Bridge
- Kongresni trg square
- Cobblers' Bridge
- Ursuline Church of the Holy Trinity
- Church of St. James
- Trg republike square
- Parliament
- Miklošičeva ulica street (Art Nouveau)
- Žale Cemetery
- Archaeological parks
- ZOO
- National and University Library
- Trubar's House of Literature
- Ljubljana Botanical Garden
- AKC Metelkova mesto Cultural Centre
- City Art Gallery
- Jakopič Gallery
- Plečnik House
- Museum of Modern Art
- Railway Museum
- Slovene Ethnographic Museum
- National Museum of Slovenia Metelkova
- Museum of Contemporary Art Metelkova

